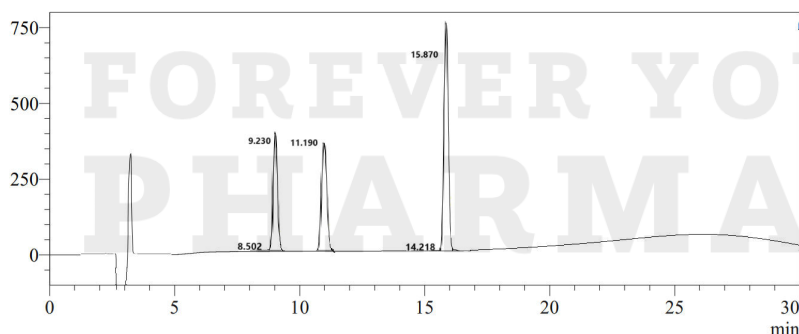


**CERTIFICATE OF ANALYSIS**

**SAMPLE INFORMATION**

<b>Product Name</b>	Glow Blend (GHK-CU 25mg, BPC-157 10mg, TB-500 5mg)
<b>Client Name/Lot No.</b>	Forever Young Pharmacy / 2412GL40
<b>Sequence</b>	GHK-CU (Glycyl-histidyl-lysine) BPC-157 (Gly-Glu-Pro-Pro-Pro-Gly-Lys-Pro-Ala-Asp-Asp-Ala-Gly-Leu-Va) TB-500 (Ac-Ser-Asp-Lys-Pro-Asp-Met-Ala-Glu-Ile-Glu-LysPhe-A sp-Lys-Ser-Lys-Leu-Lys-Lys-Thr-Glu-ThrGln-Glu-Lys-A sn-Pro-Leu-Pro-Ser-Lys-Glu-Thr-IleGlu-Gln-Glu-Lys-Gln-Ala-Gly-Glu-Ser)
<b>Dissolution condition</b>	100% H2O
<b>Length</b>	GHK-CU (3AA) BPC-157 (15AA) TB-500 (43AA)
<b>Molecular Weight</b>	GHK-CU (402.92 g/mol) BPC-157 (1419.53 g/mol) TB-500 (4963.4 g/mol)

**CHROMATOGRAM**



Peak #	Ret. Time	Area %
1	8.502	0.181
2	9.230	20.333
3	11.190	15.011
4	14.218	0.055
5	15.870	64.423

**TEST RESULTS**

	Specifications	Results
<b>Strength</b>	GHK-CU 25.00mg BPC-157 5.00mg TB-500 10.00mg	GHK-CU 26.40mg BPC-157 6.24mg TB-500 11.45mg
<b>Appearance</b>	Royal blue lyophilized powder	Conforms
<b>Purity</b>	≥98.0%	99.8%
<b>pH value</b>	6.0-8.0	7.0
<b>Impurity</b>	Single Impurity ≤1.0%	0.1%
	Total Impurity ≤2.0%	0.2%

**TEST PARAMETERS**

<b>Pump A</b>	0.1% trifluoroacetic in 100% water
<b>Pump B</b>	0.1% trifluoroacetic in 100% acetonitrile
<b>Total Flow</b>	1.0ml/min
<b>Wavelength</b>	220nm
<b>Analytical Column Type</b>	Agilent ZORBAX StableBond 5µm C18 (4.6*250mm*5 µm)
<b>Dissolution Method</b>	100% H2O
<b>Injection Volume</b>	20uL

**CONCLUSION**

One 3ml vial contains a royal blue lyophilized powder with a translucent purple cap and Lot# 2412GL40.

The sample was analysed using Reverse Phase High Performance Liquid Chromatography (RP-HPLC) and determined to contain 99.8% Glow Blend (GHK-CU 40.40 mg, BPC-157 6.24 mg, TB-500 11.45 mg), and the rest are impurities of minor significance.

**CERTIFIED BY:**



Dane Fredericksen  
Analytical Chemist

**\*\*Verify the validity of test results by contacting support@foreveryoungpharmacy.com\*\***